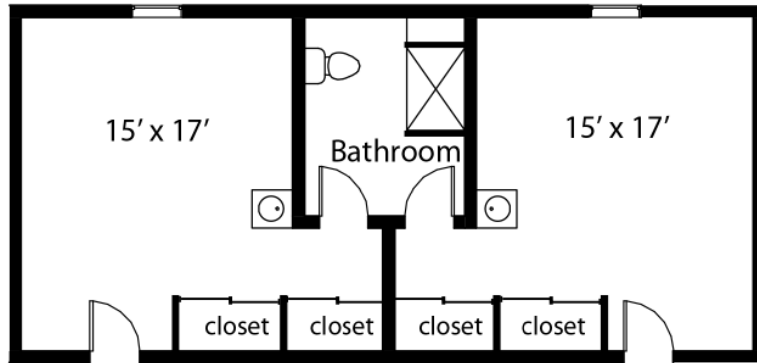
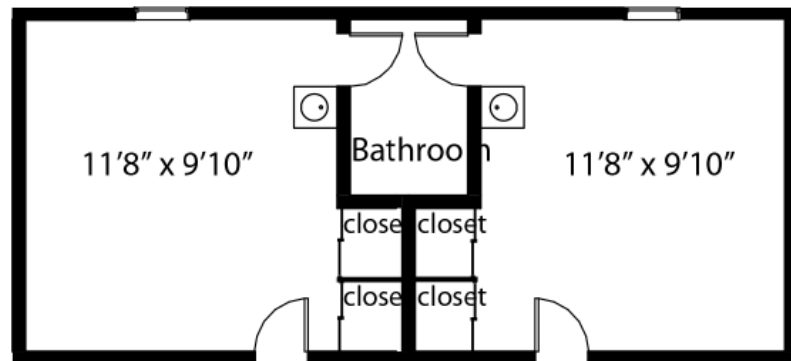


Residence Hall Commonly-Requested Room Dimensions

North Wallace Suite*



South Wallace Suite*

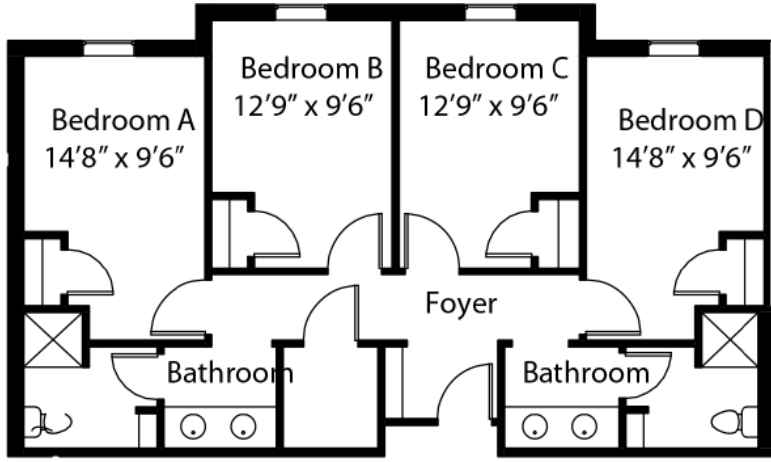


NORTH Closets (WxD)	2 closets, 50" x 23" each
SOUTH Closets (WxD)	2 closets, 32" x 26" each
Desk Surface Area (WxD)	3'5" x 2'
# of Desk Drawers	1 Pencil Drawer, 3 Side Drawers
Desk Drawers (LxWxD)	Top 2 are 18" x 13" x 3.5" Bottom 18" x 13" x 9.5"
Dimensions of Desk Hutch with Light (WxDxH)	3'2" x 1'2" x 7.5"
Mattress	Twin X-Long
Window (WxH)	64" x 56"
Dresser (WxHxD)	3'2" x 1'2" x 7.5"
Number of Dresser Drawers	3
Space Under Bed on Short Legs (3 settings available)	1'4" 24" 27"
Space Under Bed on Tall Legs	50"

Drury University Housing – Holly Binder, Exec. Director
 FSC 120 417-873-7654 housing@drury.edu
www.drury.edu/housing

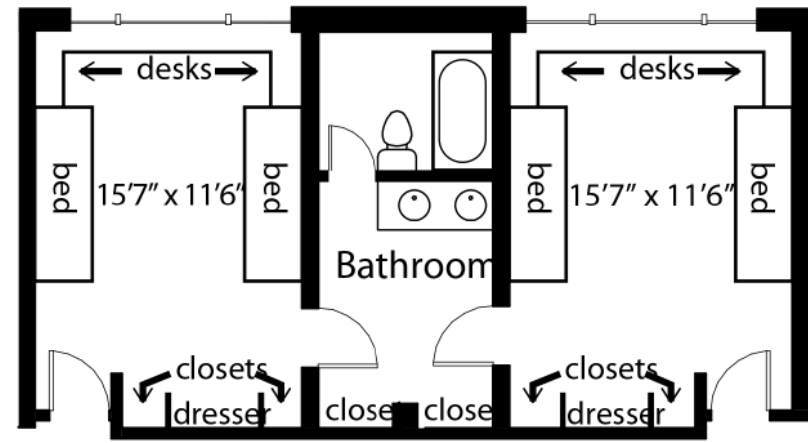
*Please note that rooms 214, 215, 224, 225, 314, 315, 324, 325 are several square feet smaller. Rooms 101, 102, 109, and 110 are wheelchair accessible and do not have cabinetry under the in-room sink.

Sunderland Suite



Closet (WxD)	40" x 24"
Communal Closet (WxD)	4'10" x 4'11"
# of Desk Drawers	1 pencil drawer
Desk Surface Area (WxDxH)	48" x 24" x 29"
Pencil Drawer (WxD)	2'8" x 1'11"
Dimensions of Desk Hutch with Light (WxD)	32" x 8.2"
Mattress size	Twin X-Long
Window (WxH)	34 ¾" x 59 ½"
Dresser (WxDxH)	36" x 24" x 29"
Height From Top of Window to Floor	7'6"
Dresser Drawer Depth	Top: 3.5" Bottom two: 6"
Bathroom Shelf Width	15.5" (height adjustable)

Smith Suite



2 Closets (WxD)	30" x 24"
Desk Surface Area (WxD)	57" x 28"
# of Desk Drawers	3
Desk Drawer (WxLxD)	1 at 13" x 17" x 2" 2 at 13" x 17" x 7"
Flip-Up Vanity (WxDxL)	2' x 21" x 4"
Mattress Size	Twin X-Long
Window (WxH)	126" x 69"
Shared Dresser Drawers (WxLxD)	2 at 30" x 16" x 3" 4 at 30" x 16" x 7"
Under-bed Drawers (WxLxD)	1'11" x 2'4" x 5.5"
Width Between Beds	5'7"
Height from Floor to Bottom of Bathroom Counter	22.75"
Space Between Sink Pipes	24"
Closets in Bathroom (WxD)	2 closets, 39" x 27"